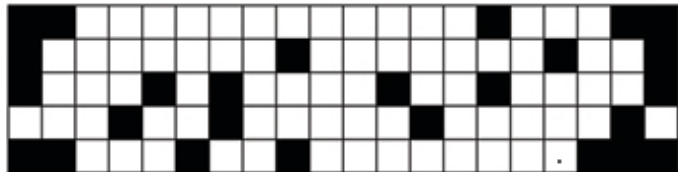


FALLEN PHRASE

**Each letter appears in the same column,
but below where it should be.
You must put the letters back in
the grid and rebuild the phrase.**



L L R T O Y

P R W N P B E N A U O T

A G E C E D P A A E N O A S A U E

N D O T I O F E H R S T F B T H E M

A S R E A A A L A R I C T S R E R W E A

find answer on www.familiesonthego.org

Created by Puzzlemaker at DiscoverySchool.com